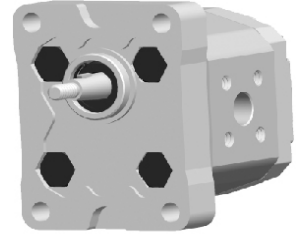




PRODUCT CARD



GEAR PUMPS "E" SERIES GROUP 1

10.38.1209.02.00



SERIE 1PE - 1PE SERIES



COME ORDINARE - HOW TO ORDER

1	PE	Cilindrata Size	Rotazione Rotation	Bocche Ports	Albero Shaft	Flangia Flange	Pos. bocche Port position	Guarnizioni Seals	Opzioni Options
Serie Series	Pompa Pump	0.8	D Destrosa CW	GA	18	B7	-	-	-
		1.1	S Sinistrosa CCW	GC	6	B8	A	V	
		1.3	R Revers.le Reversible	GD	0	B0	B	H	
		1.6		G		P0	C	T	
		1.8		M			D	N	
		2.1		B			R		
		2.7		P					
		3.2		R0					
		3.7							
		4.2							
		4.8							
		5.8							
		7.0							
		8.0							

Posizione bocche - Port position

- Aspirazione laterale - Mandata laterale / *side Inlet - side Outlet*
- A** Aspirazione frontale - Mandata frontale / *front Inlet - front Outlet*
- B** Aspirazione posteriore - Mandata frontale / *back Inlet - front Outlet*
- C** Aspirazione posteriore - Mandata laterale / *back Inlet - side Outlet*
- D** Aspirazione laterale - Mandata frontale / *side Inlet - front Outlet*
- R** Aspirazione e Mandata posteriore / *back Inlet - back Outlet*

Guarnizioni - Seals

- Buna (-10°C + 80°C) - Max pressione in Aspirazione 3 bar assoluti / *Inlet pressure up to 3 bar absolute*
- V** Viton (-10°C + 120 °C) - Max pressione in Aspirazione 3 bar assoluti / *Inlet pressure up to 3 bar absolute*
- H** Silicon (-40°C + 80°C) - Max pressione in Aspirazione 3 bar assoluti / *Inlet pressure up to 3 bar absolute*
- T** Buna (-10°C + 80°C) - Max pressione in Aspirazione 6 bar assoluti / *Inlet pressure up to 6 bar absolute*
- N** Buna (-10°C + 80°C) - Max pressione in Aspirazione 10 bar assoluti / *Inlet pressure up to 10 bar absolute*

1PE – B.06.B0



Filetti M6 profondità utile 12 mm

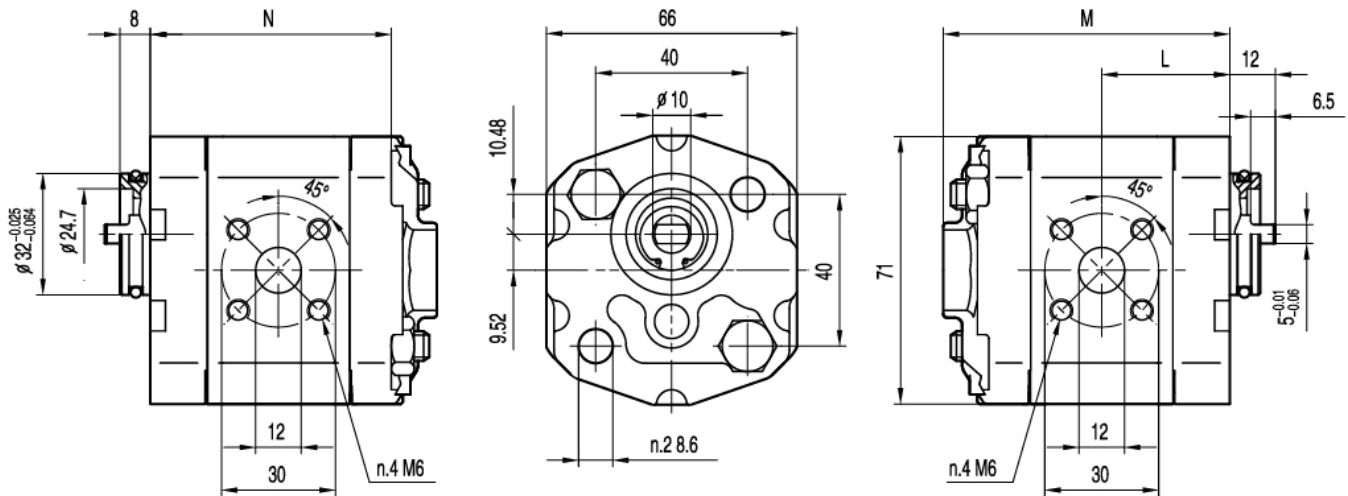
M6 threads depth 12 mm

Assemblaggio con 2 tiranti da M8 coppia di serraggio 27 ± 3 Nm

To mount the pump n.2 x M8 screws with a torque wrench settings fixed at 27 ± 3 Nm

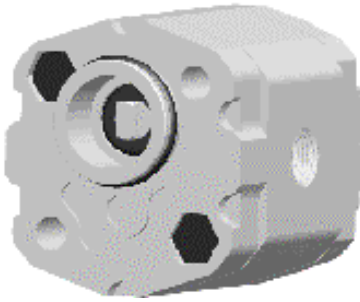
**MANDATA
OUTLET**

**ASPIRAZIONE
INLET**



Tipo Type	Cilindrata Displacement (cm ³ /rev)	Pressione massima Max pressure			Velocità massima Max. speed (r/min)	Velocità minima Min. speed (r/min)	Dimensioni Dimensions		
		P1 bar	P2 bar	P3 bar			M mm	N mm	L mm
1PE 0.8	0.8	230	250	270	6000	1000	73.5	61.5	32.8
1PE 1.1	1.1	230	250	270	6000	1000	74	62	33
1PE 1.3	1.3	230	250	270	6000	1000	75	63	33.5
1PE 1.6	1.6	230	250	270	6000	1000	76	64	34
1PE 1.8	1.8	230	250	270	6000	1000	77	65	34.5
1PE 2.1	2.1	230	250	270	6000	1000	78	66	35
1PE 2.7	2.7	230	250	270	6000	800	80	68	36
1PE 3.2	3.2	210	230	250	5000	800	82	70	37
1PE 3.7	3.7	210	230	250	4500	800	84	72	38
1PE 4.2	4.2	210	230	250	4000	800	86	74	39
1PE 4.8	4.8	190	210	230	3500	600	88	76	40
1PE 5.8	5.8	190	210	230	3000	600	92	80	42
1PE 7.0	7.0	160	180	200	2500	600	96	84	44
1PE 8.0	8.0	160	180	200	2100	600	100	88	46

1PE – G.00.B0



Aspirazione e mandata laterali da 3/8" BSPP, profondità utile 12 mm

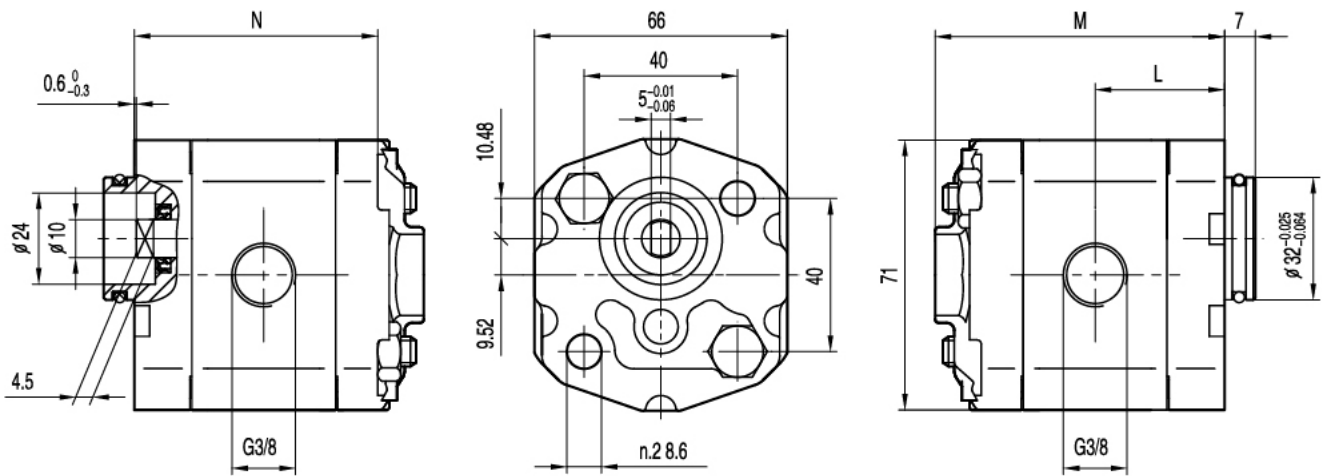
3/8" BSPP lateral threads depth 12

Assemblaggio con 2 tiranti da M8 coppia di serraggio 27 ± 3 Nm

To mount the pump, n.2 M8 screws, with a torque wrench settings fixed at 27 ± 3 Nm

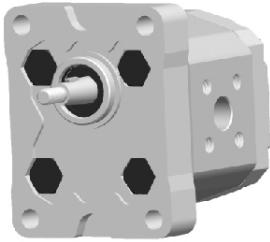
**MANDATA
OUTLET**

**ASPIRAZIONE
INLET**



Tipo Type	Cilindrata Displacement (cm ³ /rev)	Pressione massima Max pressure			Velocità massima Max. speed (r/min)	Velocità minima Min. speed (r/min)	Dimensioni Dimensions		
		P1 bar	P2 bar	P3 bar			M mm	N mm	L mm
1PE 0.8	0.8	230	250	270	6000	1000	73.5	61.5	32.8
1PE 1.1	1.1	230	250	270	6000	1000	74	62	33
1PE 1.3	1.3	230	250	270	6000	1000	75	63	33.5
1PE 1.6	1.6	230	250	270	6000	1000	76	64	34
1PE 1.8	1.8	230	250	270	6000	1000	77	65	34.5
1PE 2.1	2.1	230	250	270	6000	1000	78	66	35
1PE 2.7	2.7	230	250	270	6000	800	80	68	36
1PE 3.2	3.2	210	230	250	5000	800	82	70	37
1PE 3.7	3.7	210	230	250	4500	800	84	72	38
1PE 4.2	4.2	210	230	250	4000	800	86	74	39
1PE 4.8	4.8	190	210	230	3500	600	88	76	40
1PE 5.8	5.8	190	210	230	3000	600	92	80	42
1PE 7.0	7.0	160	180	200	2500	600	96	84	44
1PE 8.0	8.0	160	180	200	2100	600	100	88	46

1PE – B.18.P0



Filetto M6 profondità 12 mm

M6 thread depth 12 mm

Assemblaggio con 4 tiranti da M8 coppia di serraggio 27 ± 3 Nm

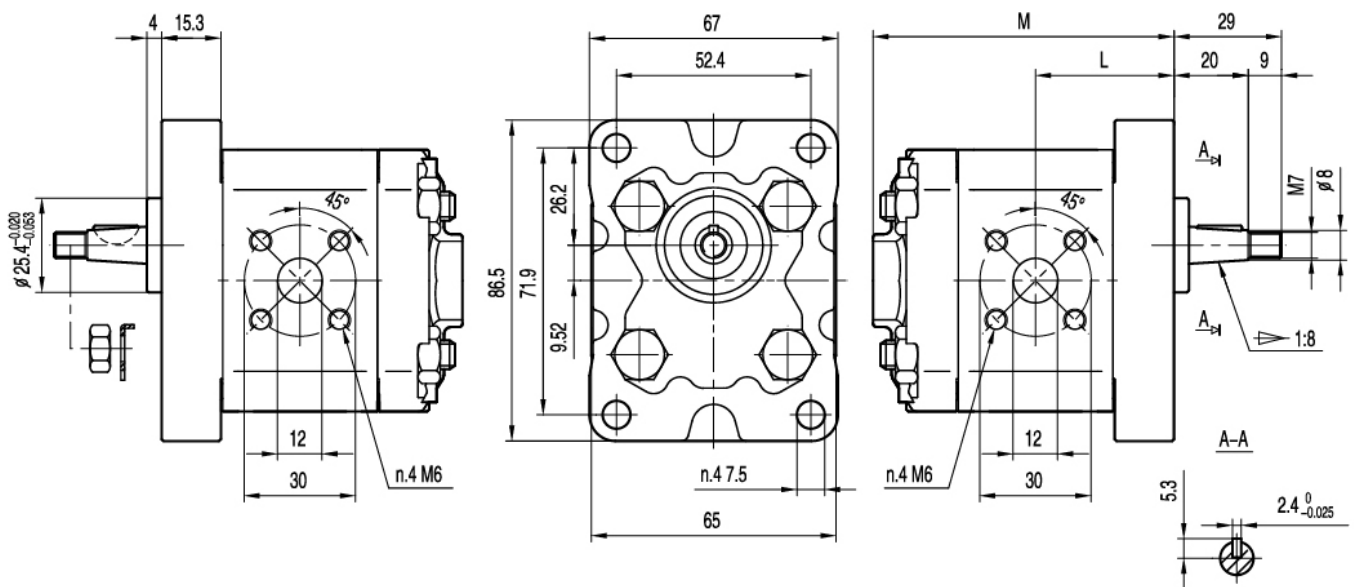
To mount the pump n.4 x M8 screws with a torque wrench settings fixed at 27 ± 3 Nm

Filetto M7 su albero con coppia di serraggio 8 Nm

Shaft M7 nut, with a torque wrench settings fixed at 8 Nm

**MANDATA
OUTLET**

**ASPIRAZIONE
INLET**



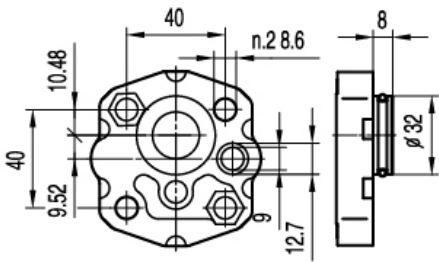
Tipo Type	Cilindrata Displacement (cm ³ /rev)	Pressione massima Max pressure			Velocità massima Max. speed (r/min)	Velocità minima Min. speed (r/min)	Dimensioni Dimensions	
		P1 bar	P2 bar	P3 bar			M mm	L mm
1PE 0.8	0.8	230	250	270	6000	1000	73.5	32.8
1PE 1.1	1.1	230	250	270	6000	1000	74	33
1PE 1.3	1.3	230	250	270	6000	1000	75	33.5
1PE 1.6	1.6	230	250	270	6000	1000	76	34
1PE 1.8	1.8	230	250	270	6000	1000	77	34.5
1PE 2.1	2.1	230	250	270	6000	1000	78	35
1PE 2.7	2.7	230	250	270	6000	800	80	36
1PE 3.2	3.2	210	230	250	5000	800	82	37
1PE 3.7	3.7	210	230	250	4500	800	84	38
1PE 4.2	4.2	210	230	250	4000	800	86	39
1PE 4.8	4.8	190	210	230	3500	600	88	40
1PE 5.8	5.8	190	210	230	3000	600	92	42
1PE 7.0	7.0	160	180	200	2500	600	96	44
1PE 8.0	8.0	160	180	200	2100	600	100	46

SERIE 1PE - 1PE SERIES

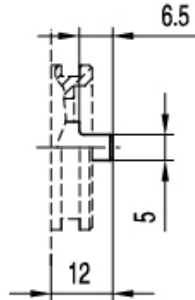


FLANGE / FRONT COVERS

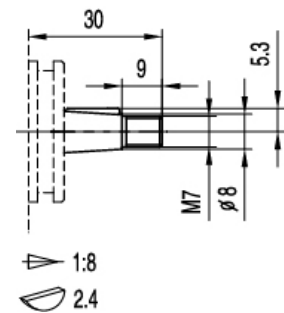
ALBERI / SHAFTS



B8



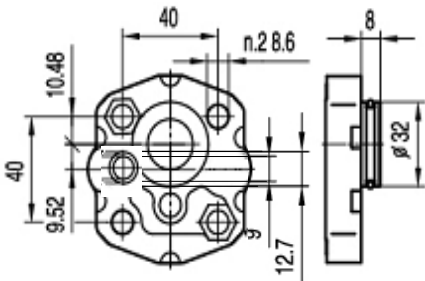
06



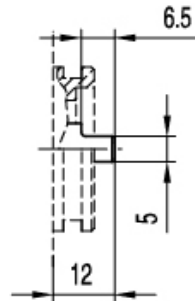
18

Coppia max 20 Nm
Max. torque 20 Nm

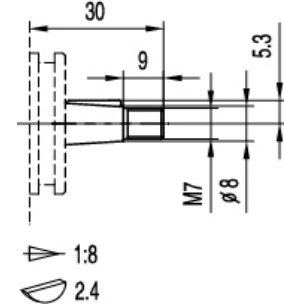
Coppia max 25 Nm
Max. torque 25 Nm



B7



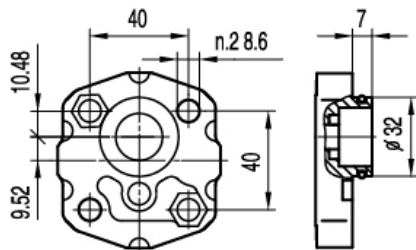
06



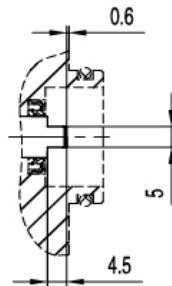
18

Coppia max 20 Nm
Max. torque 20 Nm

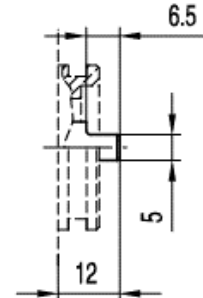
Coppia max 25 Nm
Max. torque 25 Nm



B0



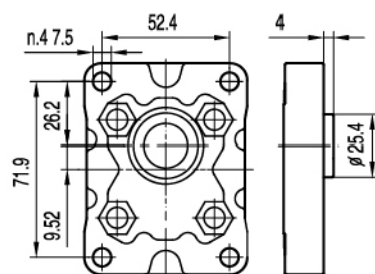
00



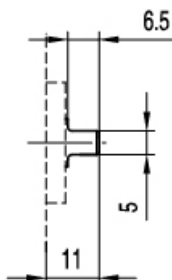
06

Coppia max 20 Nm
Max. torque 20 Nm

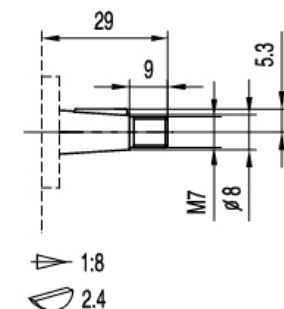
Coppia max 20 Nm
Max. torque 20 Nm



P0



06



18

Coppia max 20 Nm
Max. torque 20 Nm

Coppia max 25 Nm
Max. torque 25 Nm

SERIE 1PE - 1PE SERIES

BOCCHE / PORTS



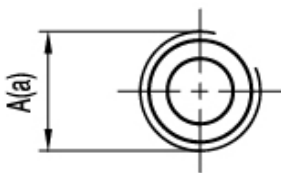
GA

Tipo Type	Aspirazione Inlet	Mandata Outlet
	A	a
1PE 0.8 ÷ 8	G1/4	Ø9



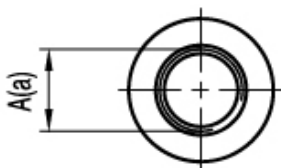
GC

Tipo Type	Aspirazione Inlet	Mandata Outlet
	A	a
1PE 0.8 ÷ 8	G3/8	Ø9



GD

Tipo Type	Aspirazione Inlet	Mandata Outlet
	A	a
1PE 0.8 ÷ 8	G3/8	G1/4

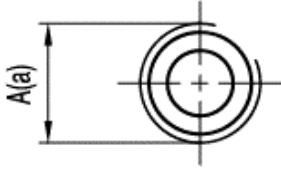


R0

Tipo Type	Aspirazione Inlet	Mandata Outlet
	A	a
1PE 0.8 ÷ 8	3/4-16UNF	9/16-18UNF

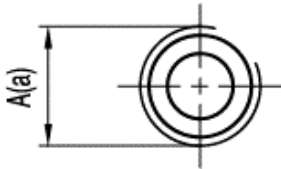
SERIE 1PE – 1PE SERIES

BOCCHE / PORTS



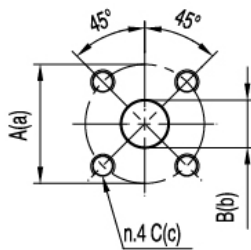
G

Tipo Type	Aspirazione Inlet	Mandata Outlet
	A	a
1PE0.8 ÷ 8	G3/8	G3/8



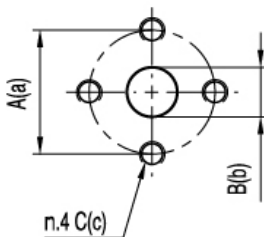
M

Tipo Type	Aspirazione Inlet	Mandata Outlet
	A	a
1PE0.8 ÷ 8	M18x1.5	M14x1.5



B

Tipo Type	Aspirazione Inlet			Mandata Outlet		
	A	B	C	a	b	c
1PE0.8 ÷ 8	30	12	M6	30	12	M6

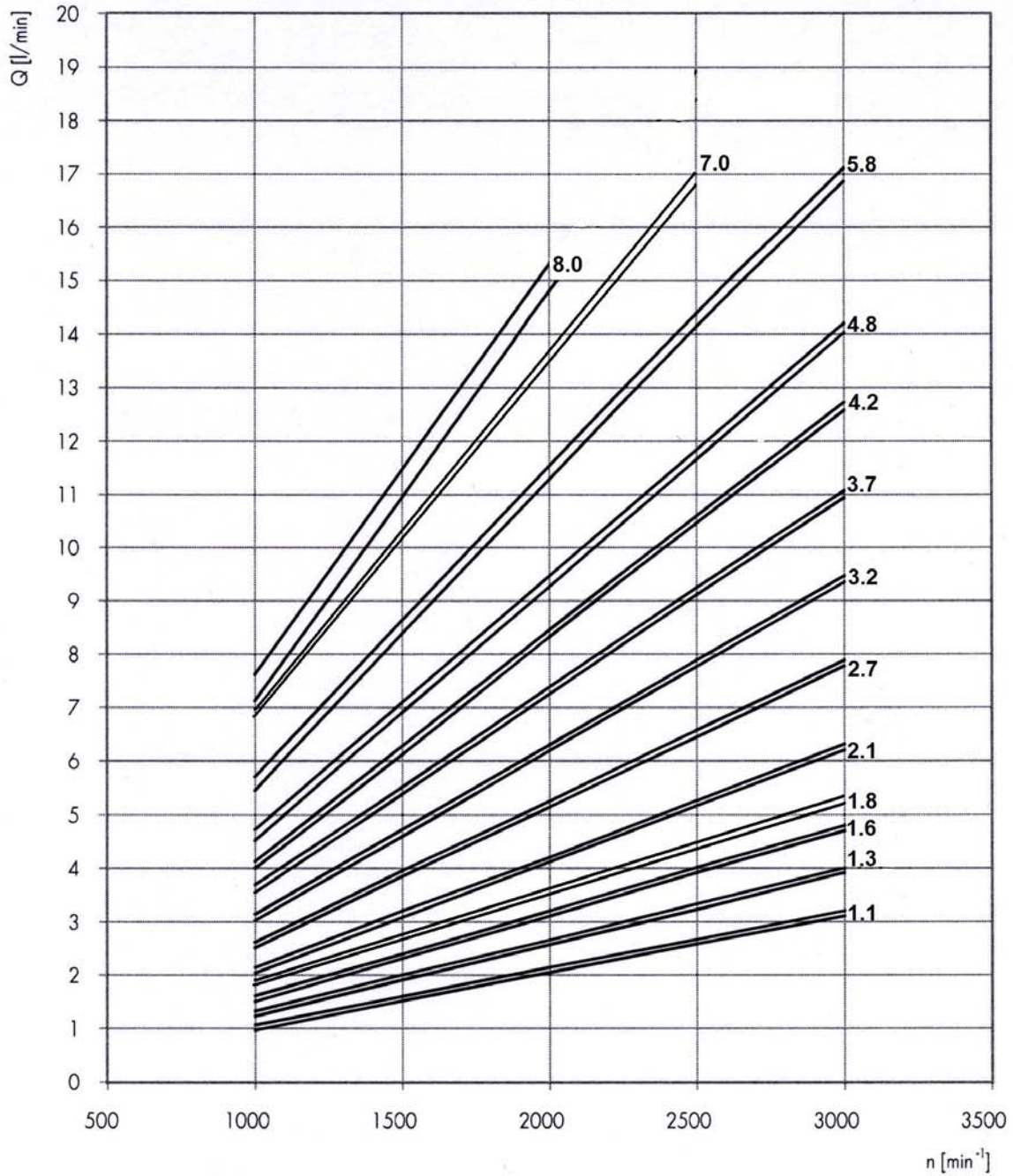


P

Tipo Type	Aspirazione Inlet			Mandata Outlet		
	A	B	C	a	b	c
1PE0.8 ÷ 8	30	12	M6	30	12	M6

SERIE 1PE / 1PE SERIES

1PE CURVE CARATTERISTICHE / 1PE PERFORMANCE CURVES



Le curve sono state ottenute alla temperatura di 50°C, utilizzando olio con viscosità 30 cSt alle pressioni sotto riportate.

Each curve has been obtained at 50°C, using oil with viscosity 30 cSt at these pressure.

1.1
1.3
1.6
2.1
2.7 | 25-230 bar

3.2
3.7
4.2 | 25-210 bar

4.8
5.8 | 25-190 bar

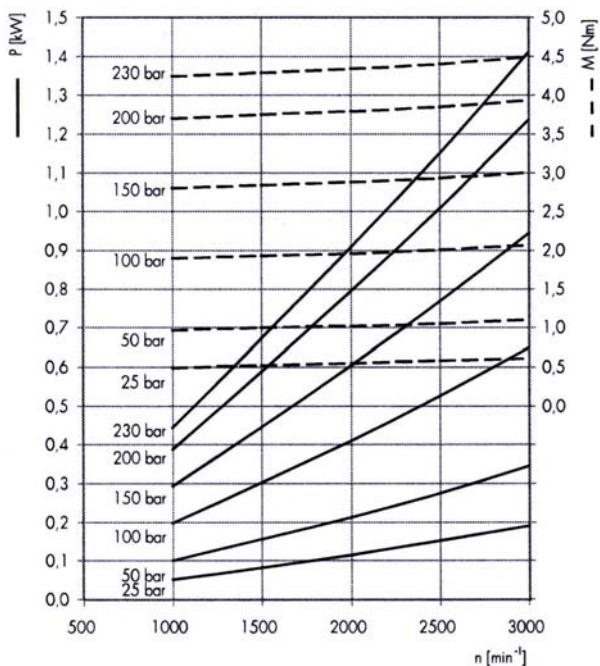
8.0 | 25-140 bar

SERIE 1PE - 1PE SERIES

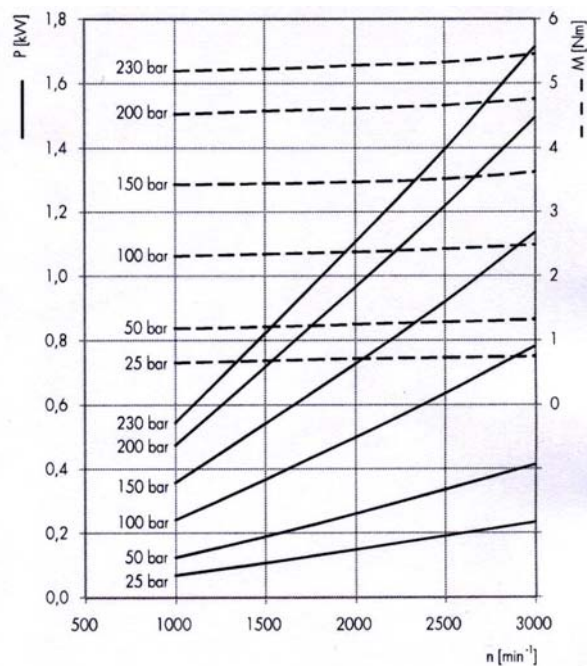


CURVE CARATTERISTICHE / PERFORMANCE CURVES

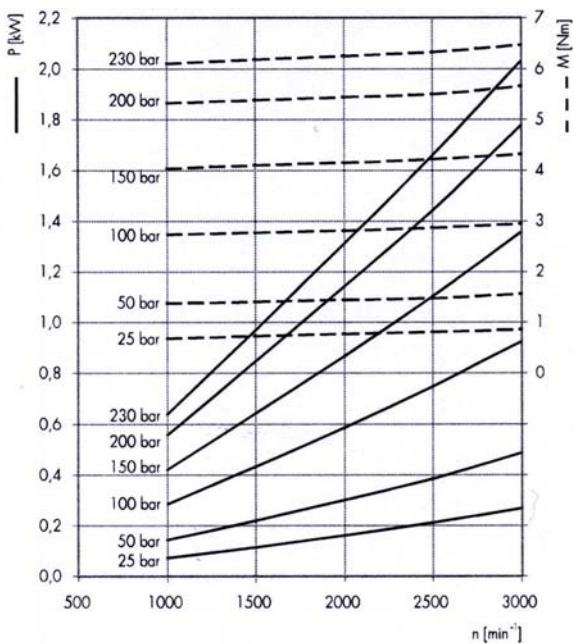
1PE 1.1



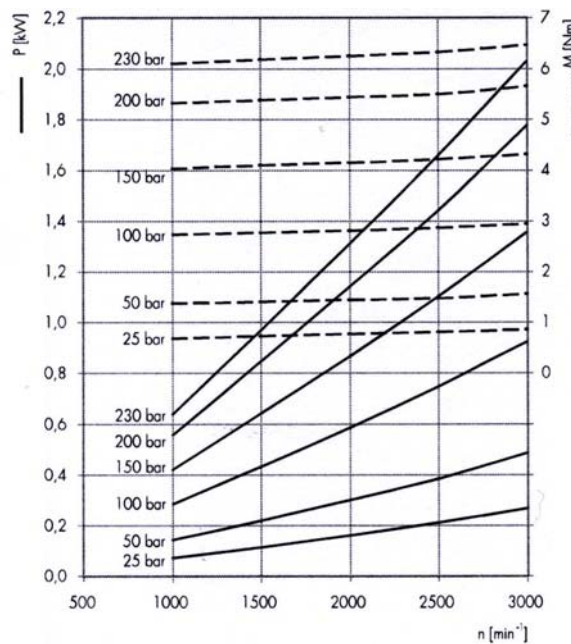
1PE 1.3



1PE 1.6



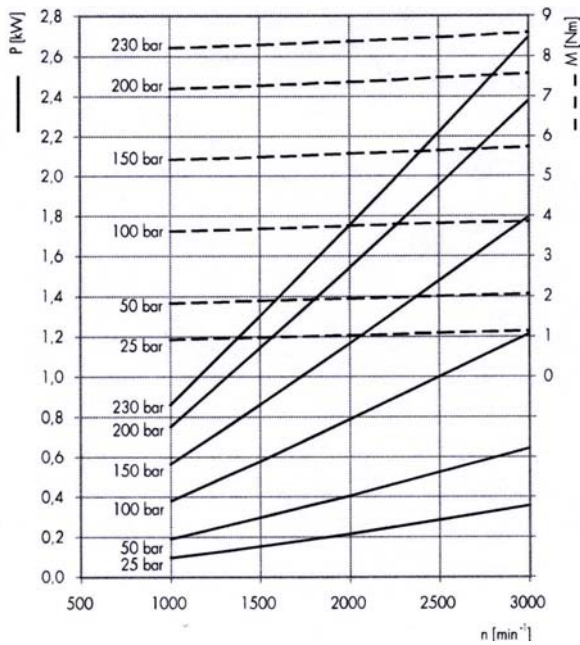
1PE 1.8



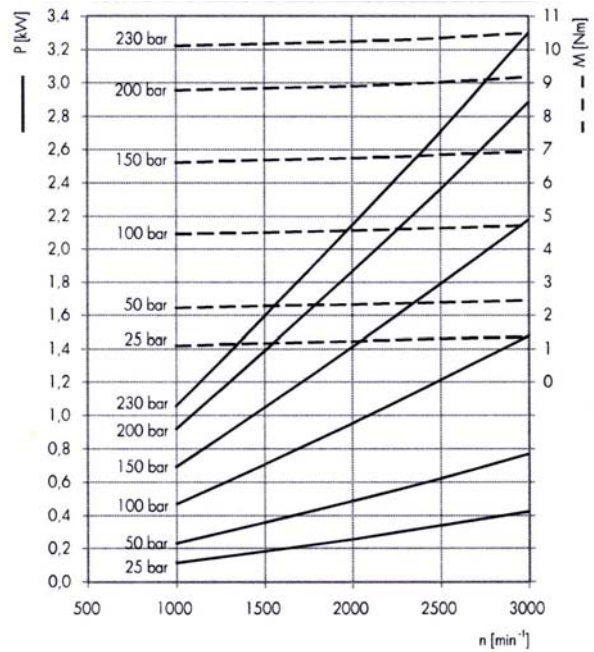
SERIE 1PE - 1PE SERIES

CURVE CARATTERISTICHE / PERFORMANCE CURVES

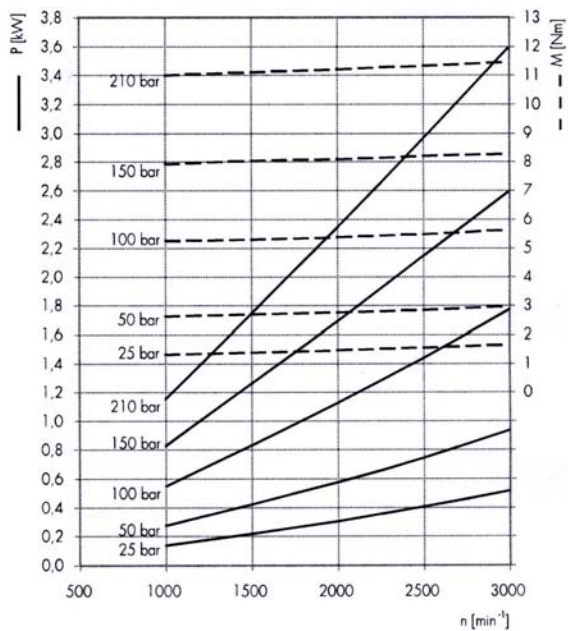
1PE 2.1



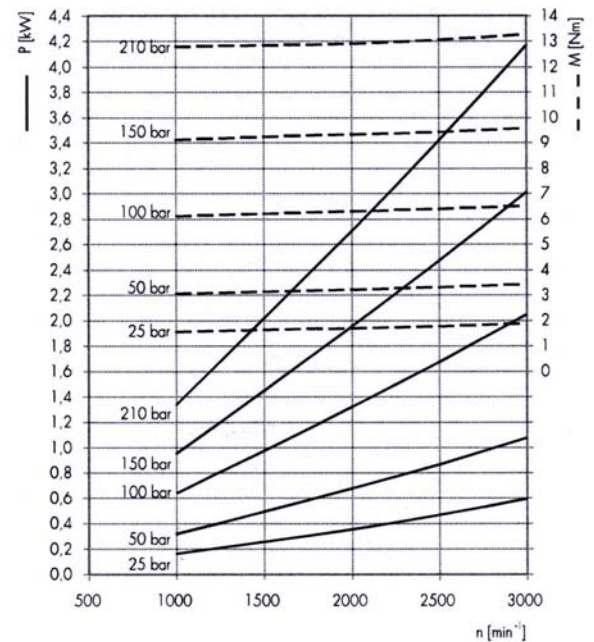
1PE 2.7



1PE 3.2



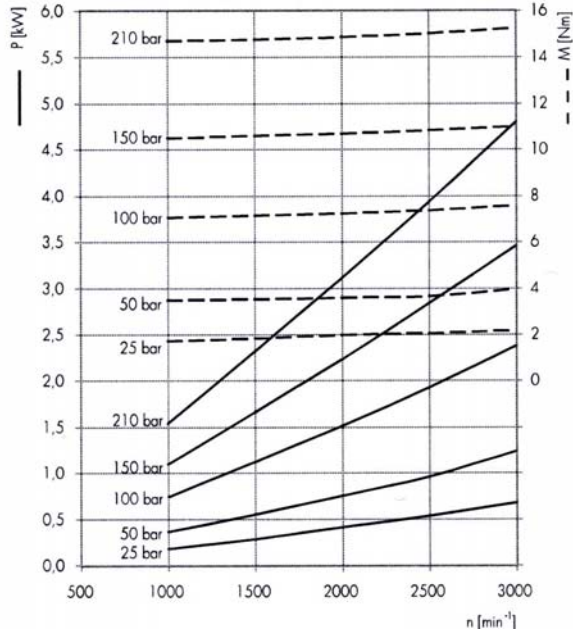
1PE 3.7



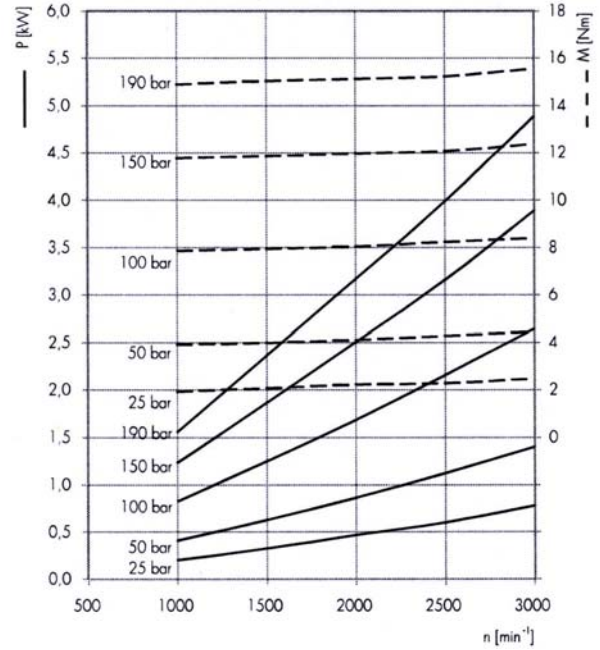
SERIE 1PE - 1PE SERIES

CURVE CARATTERISTICHE / PERFORMANCE CURVES

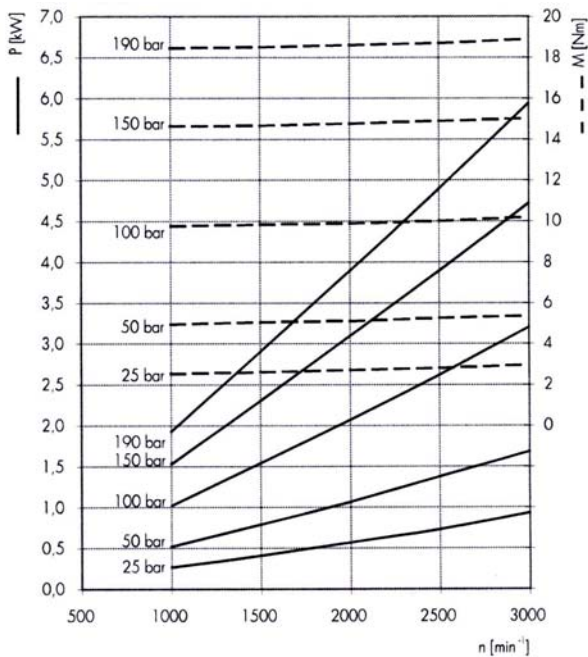
1PE 4.2



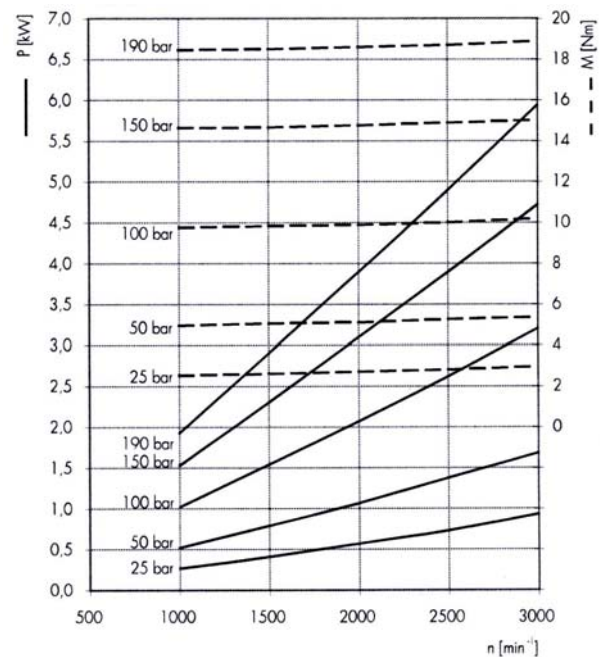
1PE 4.8



1PE 5.8



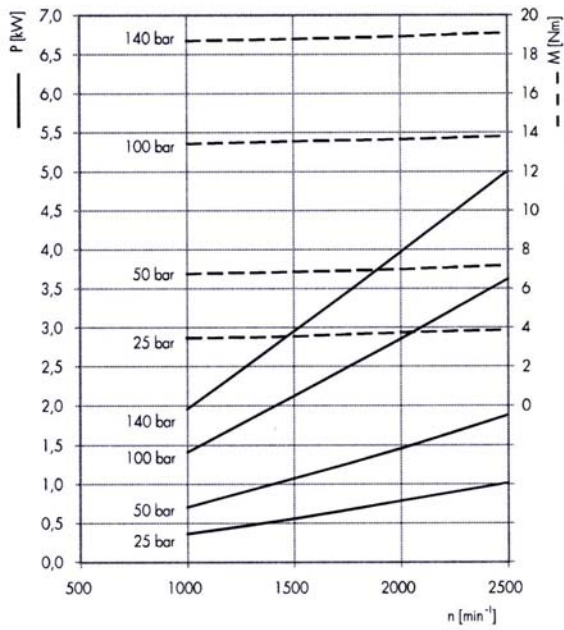
1PE 7.0



SERIE 1PE - 1PE SERIES

CURVE CARATTERISTICHE / PERFORMANCE CURVES

1PE 8.0



1PE 0.8

