

Camloc

Motion Control



RS Article No.

686-935	687-001
686-941	234-461
686-957	687-017
234-449	687-023
686-963	687-039
686-979	687-045
686-985	234-483
686-991	
234-455	



Swift & Sure

Standard lift gas spring

Swift & Sure is one of the most popular Camloc gas springs and is available in an extensive range of sizes and end fittings for a wide variety of applications.

Swift & Sure is an entirely self-contained, maintenance free, hydro pneumatic ram which is charged under pressure with an inert gas. It has the characteristics of a compression spring which, coupled with a small change in force as it extends, provides a controlled rate of movement. At the end of the extension stroke, oil damping occurs due to a hydraulically cushioned zone. These features help protect hinges and mounts by applying constant force with a damped end of travel.

Camloc Motion Control Ltd prides itself on its service to customers, with design engineers on hand to work with you using the latest CAD/CAE techniques. Recognising that no two applications are the same, Camloc Motion Control Ltd provides engineered solutions to meet your exact requirements.

Together, we can select the most appropriate gas spring for your application and provide prototypes within 14-days for testing on your application. Swift & Sure gas springs are ideally suited for use on many applications such as access panels, lids, covers, guards, bonnets and hatch covers.

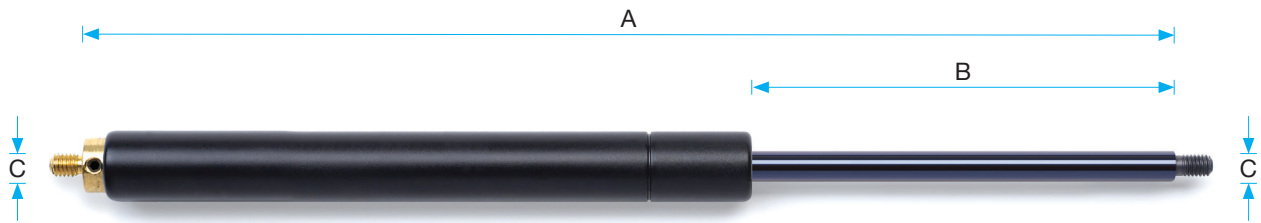
Benefits

- Custom design, sized to your application
- Self contained unit and maintenance free
- Safe to use with easy positional control
- Custom force setting with either fixed or adjust-yourself option
- Over 2,500 different combinations
- BS EN ISO 9001 Registered Company

Pack Contents

- Parts are supplied boxed as a kitted pair comprising;
- 2 x Swift & Sure with Vari-Lift™ valve
 - 4 x Pre-fitted ball joint end fittings
 - 4 x Optional eye end fittings (not 14-28 models)
 - 1 x Allen key for degassing Vari-Lift™ valve
 - 1 x Instruction leaflet





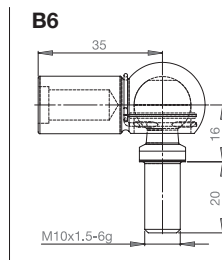
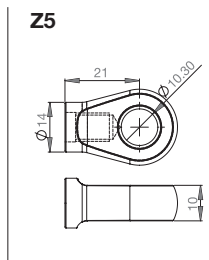
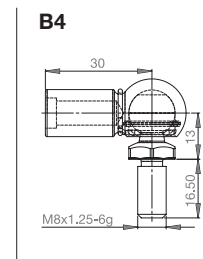
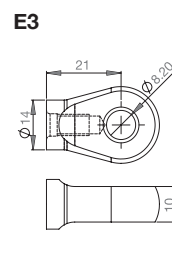
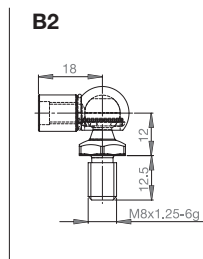
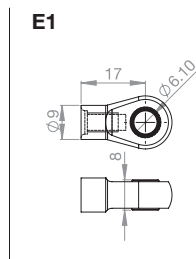
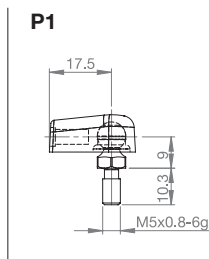
An extensive range of sizes and forces

Gas springs are commonly referred to by their size. Typically, the four common sizes for gas springs are 6-15, 8-18, 10-23 and 14-28, although other sizes are available. The sizes directly relate to the diameter of the rod and the tube, for example an 8-18 will have a rod diameter of 8mm and a tube diameter of 18mm.

Swift & Sure

RS No.	Camloc Part No.	Econoloc Size (mm)	Max. Approx. Lift Weight (per PAIR of springs)	Extended Length Excl. End Fittings (mm) A	Stroke (mm) B	Thread Size C	Max. Force Per Spring (Newtons)	Supplied End Fit *Denotes Pre-Fitted
686-935	SWV6050500034	6-15	Up to 10Kg	160	60	M5 x 0.8	400N	P1* & E1
686-941	SWV6050500035			240	100			
686-957	SWV6050500036			340	150			
234-449	SWV6050500037			440	200			
686-963	SWY8060600055	8-18	10 to 40Kg	264	100	M6 x 1.0	650N	B2* & E3
686-979	SWY8060600056			364	150			
686-985	SWY8060600057			464	200			
686-991	SWY8060600058			564	250			
234-455	SWV1080800027			245	100			
687-001	SWV1080800028			445	200			
234-461	SWV1080800026	545	250	10-23	40 to 150Kg	M8 x 1.25	1200N	B4* & Z5
687-017	SWV1080800029	645	300					
687-023	SWV4101000018	480	200					
687-039	SWV4101000019	680	300					
687-045	SWV4101000020	880	400	14-28	150 to 350Kg	M10 x 1.5	2500N	B6*
234-483	SWV4101000021	1080	500					

End Fitting Dimensions (see table above for corresponding Econoloc)



Vari-Lift™ Valve and De-gassing

Parts are supplied fitted with a Vari-Lift™ valve. The force in the gas spring is set to the maximum. Each gas spring is then de-gassed to the force required using a standard 2mm Allen key (supplied). Fit the gas spring to the application with the rod down and brass Vari-Lift™ valve uppermost.

Using the Allen key provided, undo the Allen screw approximately ¼ of a turn until the gas can be heard escaping. Do not remove the Allen key. Tighten the Allen screw almost immediately. Do not use excessive force. Repeat on the second gas spring and try the application. Ensure that the Allen screw is fully tightened each time.

Repeat the process releasing a small amount of gas at a time until the required action is achieved.

Camloc Motion Control Ltd
15 New Star Road, Leicester, LE4 9JD, UK
Tel: +44 (0)116 274 3600 Fax: +44 (0)116 274 3620
E-mail: info@camloc.com Website: www.camloc.com

Vari-Lift, Swift & Sure, Stop & Stay and Econoloc are trade names of Camloc Motion Control Ltd.

Camloc
Gas Springs



FMS83999