

Series 1



Series 2



Series 3



**Features and Benefits**

- Consistent flow rate across variable pressures
- Flow range from 15 to 140 GPH (45 to 425 LPH)\*
- Horsepower required 0.06 to 0.63 hp (45 to 469 Watt)
- Self priming (water) and maintenance free with low vibration and pulsation characteristics
- Works with fluid with viscosity up to 100 centipoise (cP), temperature between -4°F to 194°F (-20°C to 90°C)<sup>1</sup>
- Brass housing works with TDS max 5,000
- Stainless steel housing works with acidity > 2 pH and brass housing works with acidity > 6 pH<sup>1</sup>
- Clockwise and counter clockwise rotation available only for Series 2 and 3
- Internal Relief valve configuration (also available without relief valve)
- Series 1 available in long Neck clamp-on for special applications
- Integral strainer for debris removal available in Series 1

**General Applications**

- Carbonation
- Espresso/Coffee
- Welding
- Cold Carb Circulation
- Reverse Osmosis
- Beer Chillers
- Pesticide Systems
- Solar Applications
- Cooling Systems

\*GPH rating at 1725 RPM/60Hz and LPH rating at 1450 RPM/50Hz

**Technical Information**

Pump Housing Material	Series 1 & 2 - Brass (1.5%) or Low Lead Brass (0.2%); Series 3 - 304 Stainless Steel		
Seals	Carbon / Ceramic, or Carbon / Silicon Carbide (balanced and non-balanced)		
Elastomers	Nitrile, Ethylene Propylene (EPDM), Fluorocarbon, or Neoprene		
Valves	Stainless steel, Brass, or Plastic (high temp ultem, low temp acetal)		
Drive configurations	Single flat, Double flat or Slotted with bronze or Plastic Couplings		
Vanes	Carbon or PEEK	Mounting Options	Clamp-on or Bolt-on
Ports	G 3/8" or NPT 3/8"	Unit Weight	Approx. 2.5 lbs. (1.1kg)

**Operating Range**

Max Static Pressure	100 PSI (7 BAR)	Max Discharge Pressure	250 PSI (17 BAR)
Fluid Temperature	-4° to 194°F (-20° to 90°C)	Speed	1000 to 2400 RPM
Viscosity	100 cP	Wet Lift with Water	6 ft (2M)

Series 1, 2, and 3 Nominal Volume*										
Flow rate (GPH/ LPH)	Gallons Per Hour/Liters Per Hour					Brake Horsepower/Watts (motor shaft power)				
	Pressure (PSI/Bar)					Pressure (PSI/Bar)				
	50/3.4	100/6.9	150/10.3	200/13.8	250/17.5	50/3.4	100/6.9	150/10.3	200/13.8	250/17.5
140/425	143/447	141/441	139/434	137/428	135/422	0.17/127	0.28/209	0.40/298	0.52/387	0.63/469
125/375	128/400	126/394	124/388	122/381	120/375	0.16/119	0.26/194	0.36/268	0.47/350	0.57/425
110/330	111/347	109/341	107/334	105/328	103/322	0.15/112	0.25/186	0.34/253	0.44/328	0.54/402
100/300	102/319	100/313	98/306	96/300	94/294	0.13/97	0.20/149	0.28/209	0.35/261	0.42/313
80/240	82/257	80/256	78/244	76/238	74/231	0.12/89	0.18/134	0.25/186	0.32/238	0.39/291
70/210	72/225	70/219	68/213	66/206	64/200	0.11/82	0.17/127	0.24/179	0.30/224	0.37/276
60/180	62/194	60/188	58/181	56/175	54/169	0.10/75	0.16/119	0.23/171	0.29/216	0.35/261
50/150	52/163	50/157	48/150	46/144	44/138	0.09/67	0.15/112	0.21/157	0.27/201	0.33/246
35/100	37/116	35/110	33/103	31/97	29/91	0.08/51	0.14/104	0.19/142	0.24/179	0.29/216
25/75	27/85	25/78	23/72	21/66	19/59	0.07/52	0.12/89	0.17/127	0.22/164	0.27/201
15/45	17/53	15/47	13/41	11/34	--	0.06/45	0.10/75	0.15/112	0.19/142	--



**RoHS**



**WRAS**



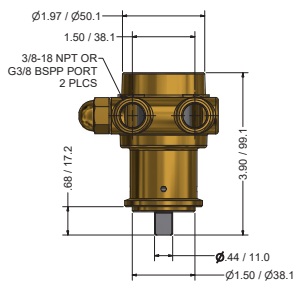
<sup>1</sup> Consult with manufacturer for extreme operating conditions

<sup>2</sup> Consult with manufacturer for information on other applications

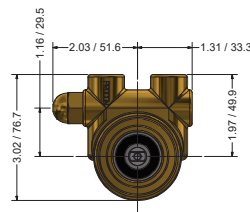
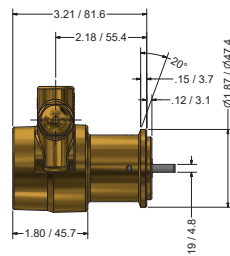
<sup>3</sup> For certificate of compliance or declarations please visit our website or email at [productcompliance@proconpump.com](mailto:productcompliance@proconpump.com)

\* GPH rating at 1725 RPM/60Hz and LPH rating at 1450 RPM/50Hz

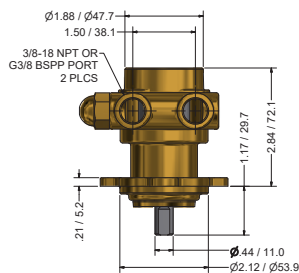
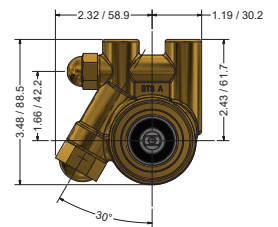
## ROTARY VANE PUMP DIMENSIONS



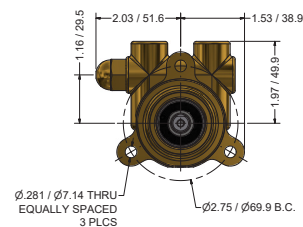
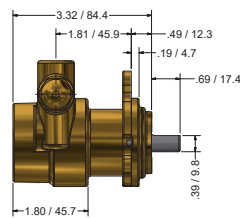
**Clamp-On Mounting**



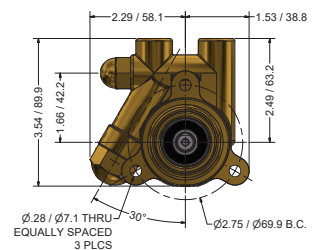
**With Strainer**



**Bolt-On Mounting**



**With Strainer**



**NOTE:**

- All dimensions are in inches/millimeters
- Bronze and plastic coupling available for clamp-on