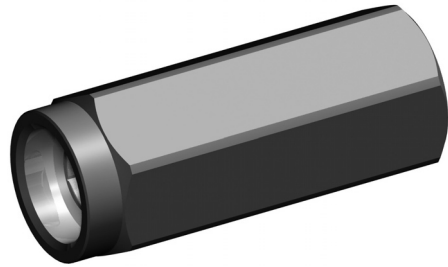
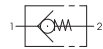


Carbon Steel

VU 2-WAY HIGH PRESSURE BALL VALVES



CHECK VALVE



VU G 1/2 CS

Type and way of valve
VU check valves

Valves dimension of inch

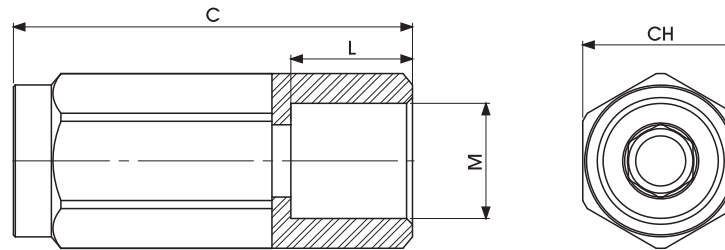
GAS	ANSI/ASME
DIN/ISO 228	B1.20.1 NPT
G 1/4	N 1/4
G 3/8	N 3/8
G 1/2	N 1/2
G 3/4	N 3/4
G 1"1/4	N 1"1/4
G 1"1/2	N 1"1/2
G 2"	N 2"

Material
Carbon steel
CS

Specifications

- Type: check valve VU
- Body: exagone
- Material: 1,0737/1,4749
- Ball seats: from 1/4 to 2"
- Operating pressure: PN500
- Temp range: -10°C to +100°C depending on seal material selected

"The company reserves the right to operate dimensional changes without prior notice".

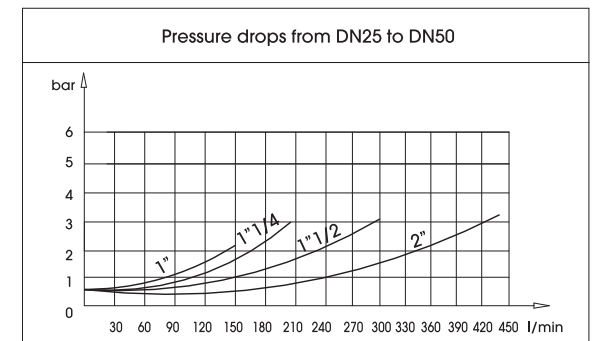
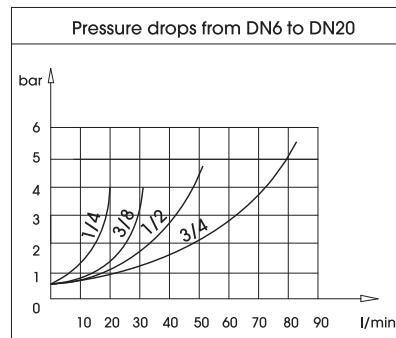
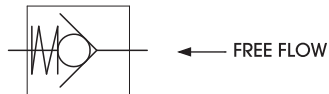


VU DIN ISO 228 BSP
Standard

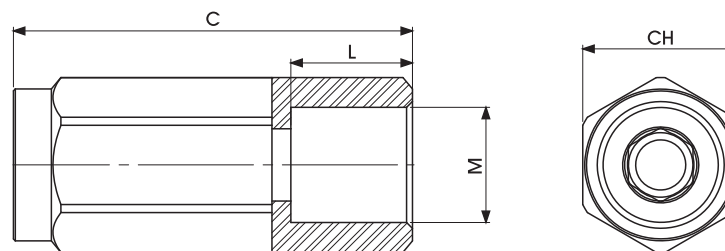
TYPE	PN	DN	MAX FLOW L/m	CRACKING PRESSURE	C	L	M	CH	Kg	ITEM CODE
VU G 1/4	40 MPa	6	15	~0.5/1 BAR	55	15.5	G 1/4	19	0,1	GC2GGT1401 10000
VU G 3/8	40 MPa	10	30	~0.5/1 BAR	65	15.5	G 3/8	24	0,18	GC2GGT2401 10000
VU G 1/2	40 MPa	13	50	~0.5/1 BAR	75	17	G 1/2	27	0,23	GC2GGT3401 10000
VU G 3/4	40 MPa	20	90	~0.5/1 BAR	86,5	21	G 3/4	35	0,45	GC2GGT4401 10000
VU G 1"	35 MPa	25	150	~0.5/1 BAR	110	24	G 1"	41	0,73	GC2GGT5301 10000
VU G 1" 1/4	35 MPa	32	200	~0.5/1 BAR	123	24	G 1" 1/4	55	1,49	GC2GGT6301 10000
VU G 1" 1/2	35 MPa	40	300	~0.5/1 BAR	138	24	G 1" 1/2	60	2	GC2GGT7301 10000
VU G 2"	25 MPa	50	430	~0.5/1 BAR	160	27	G 2"	70	2,7	GC2GGT8201 10000

PRESSURE DROPS

HYDRAULIC DIAGRAM



"The company reserves the right to operate dimensional changes without prior notice".

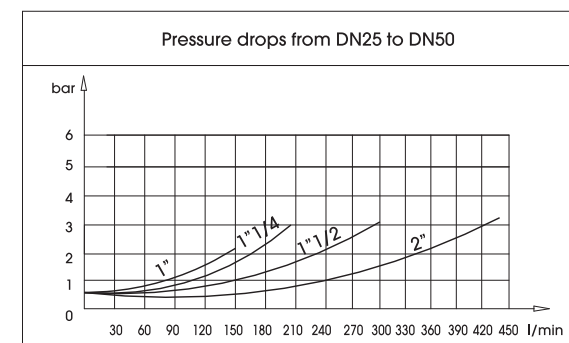
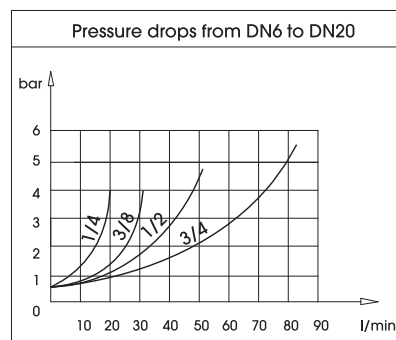
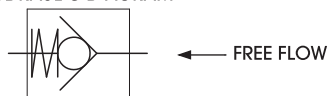


**VU ANSI/ASME
B1.20.1 NPT**
Standard

TYPE	PN	DN	MAX FLOW L/m	CRACKING PRESSURE	C	L	M	CH	Kg	ITEM CODE
VU N 1/4	40 MPa	6	15	~0.5/1 BAR	58	15.5	N 1/4	19	0,1	GC2NNT140110000
VU N 3/8	40 MPa	10	30	~0.5/1 BAR	69	15.5	N 3/8	24	0,18	GC2NNT240110000
VU N 1/2	40 MPa	13	50	~0.5/1 BAR	75	17	N 1/2	27	0,23	GC2NNT340110000
VU N 3/4	40 MPa	20	90	~0.5/1 BAR	88,5	21	N 3/4	35	0,45	GC2NNT440110000
VU N 1"	35 MPa	25	150	~0.5/1 BAR	110	24	N 1"	41	0,75	GC2NNT530110000
VU N 1" 1/4	35 MPa	32	200	~0.5/1 BAR	120	24	N 1" 1/4	55	1,49	GC2NNT630110000
VU N 1" 1/2	35 MPa	40	300	~0.5/1 BAR	138	24	N 1" 1/2	60	2,6	GC2NNT730110000
VU N 2"	35 MPa	50	430	~0.5/1 BAR	138	27	N 2"	75	3	GC2NNT830110000

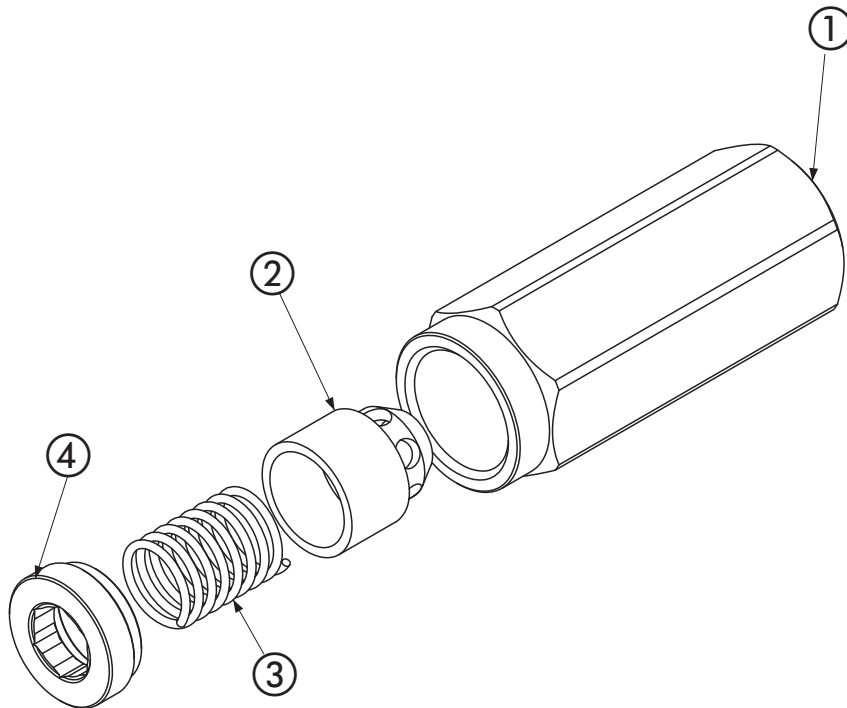
PRESSURE DROPS

HYDRAULIC DIAGRAM



"The company reserves the right to operate dimensional changes without prior notice".

VU 2-WAY HIGH PRESSURE BALL VALVES



Pos	Description	Material	Q.tà
1	Body	1,0737	1
2	Poppet	1,4749	1
3	Spring	1,0116	1
4	Ring	1,0737	1

On request

- Special Threads
- Pressure Class PN 500
- Spring closed: 1BAR - 3BAR - 5BAR - 8BAR

• For further special requests please consult our technical/commercial service

"The company reserves the right to operate dimensional changes without prior notice".